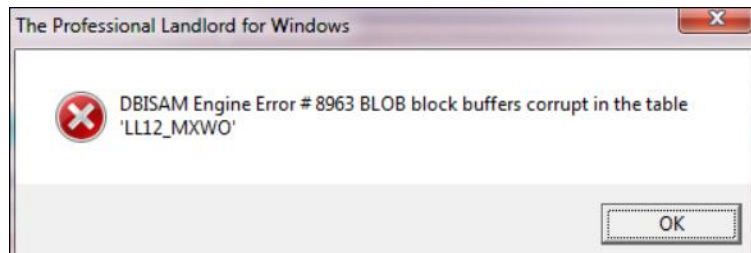


Overview

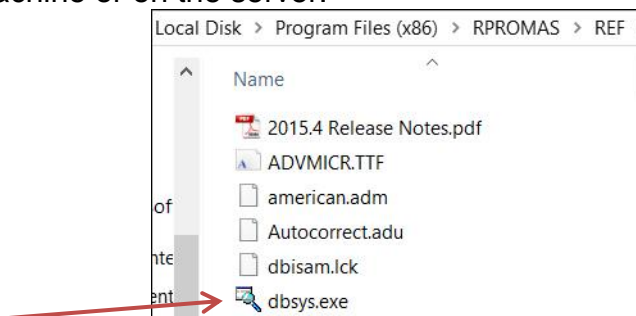
Please only use these instructions at the direction of Tech Support.

The DBSYS program can be used to repair files. When you get a message like



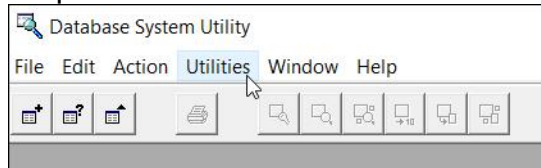
you want to use the DBSYS program to repair the LL12_MXWO file. Before using you should use the built-in utility that can be found in the program at File, Database Utilities. Click Verify Database. This is to ensure that the file in the error message is the only file needing repair. When it finishes, note any files that show errors.

1. Close everyone out of PROMAS.
2. Before closing out yourself go to Help, About to verify the location of the database files. This is usually R\PROMAS\Data\LL12_Database either on the local machine or on the server.
3. While in Help, About click on Support Backup to make a backup of your files.
4. In Windows Explorer, browse to the Program Files (x86)\R\PROMAS\REF folder. This may be on your local machine or on the server.

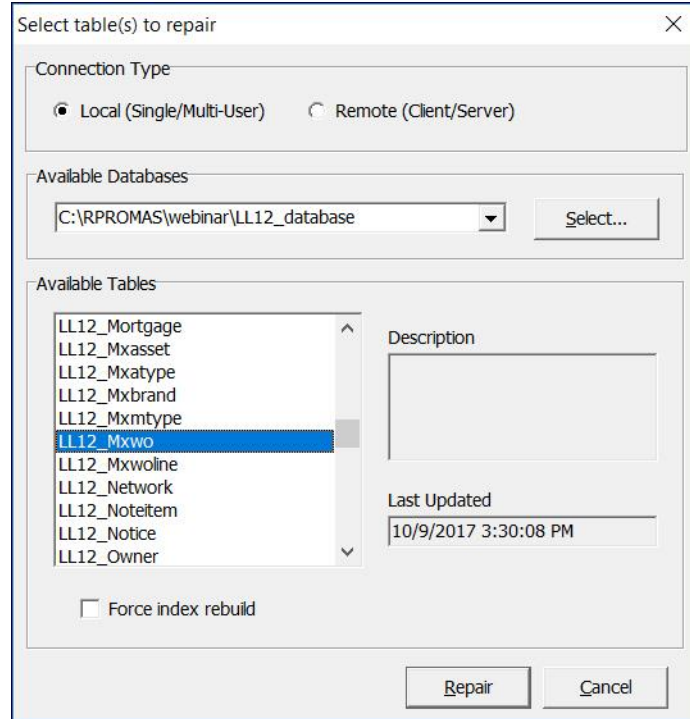


5. Find the file DBSYS.exe and double click on it to execute the program.

6. Click on Utilities, then on Repair.



7. Under Available Databases, click on Select. Then find the folder containing your data - RPROMAS\Data\LL12_Database.



8. Under Available Tables, highlight the file that appeared in the error message.

9. Click the Repair button.

10. It will let you know when the file is repaired. You can then close out of DBSYS and log back into PROMAS.

We also suggest you review the [Best Practices Guide](#) for software and environment issues that can interfere with the database engine.